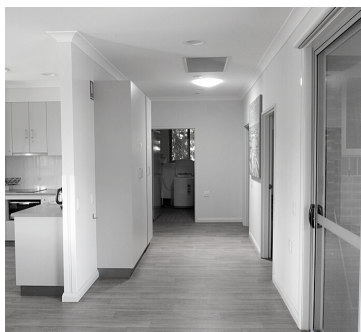


**SPECIALIST DISABILITY
ACCOMMODATION**

**SUPPORTED INDEPENDENT
LIVING**



DISCOVER TOONGABBIE

**PROPERTY
PROFILE**



QUALITY HEALTH CARE

ABOUT THE PROPERTY

Discover is a purpose- built property containing four villas desirably located in Sydney's North West.

This single storey dwelling is uniquely designed with four separate villas surrounding a communal garden, entertaining area and sports area. This large dwelling offers the opportunity for privacy if desired or the chance to socialise at the outdoor gym, basketball hoop, or communal hammocks.

Each Villa has generous sized bedrooms with large accessible bathrooms and a shared kitchen, dining and living area.

Discover is staffed 24/7 by an experienced team who can support you with daily life skills, budgeting and increased independence. Inspire offers plenty of social activities enabling you to connect with like-minded people.

WHAT'S NEAR BY

- Girraween Park
- Westmead Hospital
- Bankswest Stadium
- Cumberland Hospital
- Central Gardens Nature Reserve
- Blacktown Hospital
- Winston Hills Mall
- Riverside Theatres

Villa One:

1 x bedroom self contained Villa Basic SDA

Villa Two:

1 x bedroom self contained Villa Basic SDA

Villa Three:

1 x bedroom self contained Villa Basic SDA

Villa Four:

2 x bedroom self contained Villa Basic SDA

PROPERTY FEATURES

- 1 x large common laundry
- 1 x large common kitchen
- 1 x staff office / sleepover room
- 1 x common rear garden
- 1 x outdoor living/recreational area

“

Discover is a modern purpose built service with four separate villa dwellings

”



NEXT STEPS

If you are interested in living at Discover and you feel it will meet your living and support needs, please follow these steps to make an application:

1

STEP ONE



Contact the QHC Intake team @ intake@qualityhealthcare.com.au or call us on (02) 9598 6000 to discuss the property in more detail and lodge your interest. We will ask you to complete a participant profile form to assist us to determine matching with available vacancies.

2

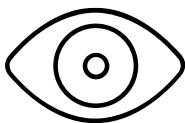
STEP TWO



Organise a viewing of the property by liaising with the QHC Intake team on (02) 9598 6000

3

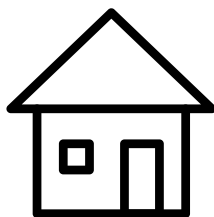
STEP THREE



If you think the property is right for you complete an application form and share your NDIS Plan with the QHC Intake team as well as any other relevant reports and assessment documents.

4

STEP FOUR



Once we get confirmation of SIL funding and the required SDA level we can submit a Roster of Care to the NDIS. Once approved and your plan is confirmed you can move into your new home.

