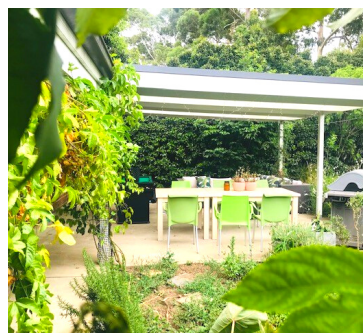
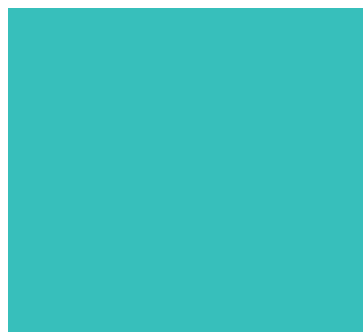


**SPECIALIST DISABILITY  
ACCOMMODATION**

**SUPPORTED INDEPENDENT  
LIVING**



# BELIEVE SEVEN HILLS

**PROPERTY  
PROFILE**



QUALITY HEALTH CARE

# ABOUT THE PROPERTY

Believe is a new service that offers 2 X 3 bedroom villas around a large communal garden desirably located in Sydney's North West.

As well as the villas which have their own kitchen, dining and living areas, there is also a large annex that offers an additional kitchen, living and dining area and is a great space for communal activities and meal preparation.

Each unit has 3 generous sized bedrooms with a large accessible bathroom and the shared spaces are fully furnished.

Believe is staffed 24/7 by an experienced team who can support you with daily life skills, budgeting and increased independence. Inspire offers plenty of social activities enabling you to connect with like-minded people.

## Villa One:

1 x 3 bedroom Basic SDA

## Villa Two:

1 x 3 bedroom Basic SDA

## PROPERTY FEATURES

- 1 x large common laundry
- 1 x large common kitchen
- 1 x staff office / sleepover room
- 1 x common rear garden
- 1 x outdoor living and BBQ area
- Dual street access

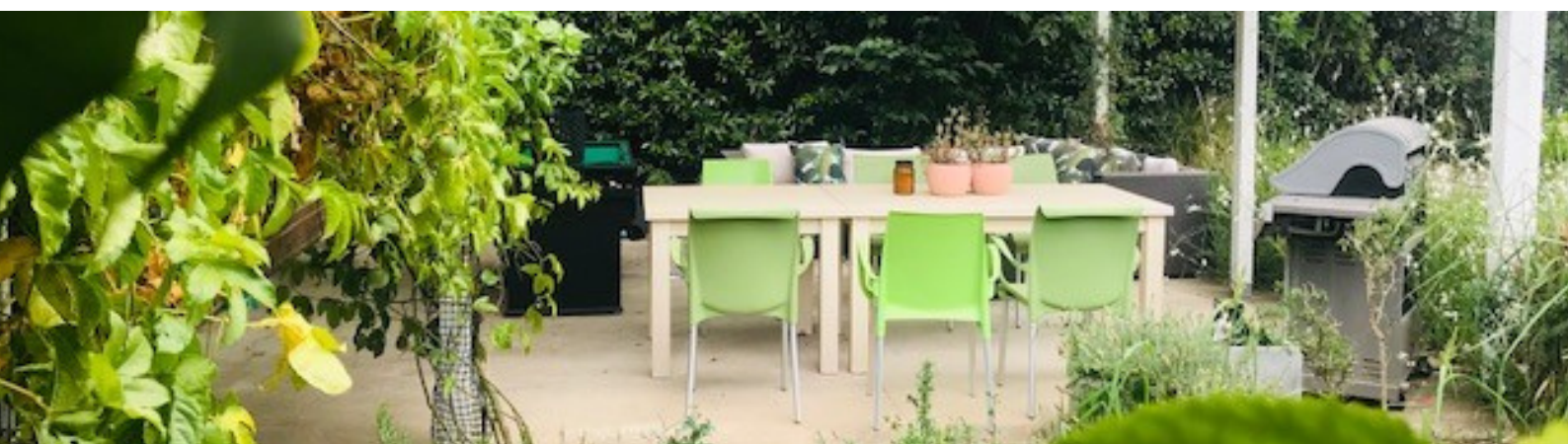
## WHAT'S NEAR BY

- Blacktown Hospital
- Westmead Hospital
- Raging Waters Sydney
- Featherdale Sydney Wildlife Park
- Bankswest stadium
- Seven Hills Plaza
- Duncan Park
- Winston Hills Mall

“

***Believe is a modern and spacious service consisting of 2 X 3 bedroom villas close to shops and amenities***

”



# NEXT STEPS

If you are interested in living at Believe and you feel it will meet your living and support needs, please follow these steps to make an application:

# 1

## STEP ONE



Contact the QHC Intake team @ [intake@qualityhealthcare.com.au](mailto:intake@qualityhealthcare.com.au) or call us on (02) 9598 6000 to discuss the property in more detail and lodge your interest. We will ask you to complete a participant profile form to assist us to determine matching with available vacancies.

# 2

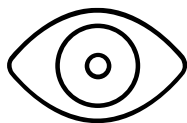
## STEP TWO



Organise a viewing of the property by liaising with the QHC Intake team on (02) 9598 6000

# 3

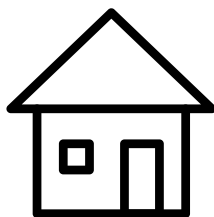
## STEP THREE



If you think the property is right for you complete an application form and share your NDIS Plan with the QHC Intake team as well as any other relevant reports and assessment documents.

# 4

## STEP FOUR



Once we get confirmation of SIL funding and the required SDA level we can submit a Roster of Care to the NDIS. Once approved and your plan is confirmed you can move into your new home.

