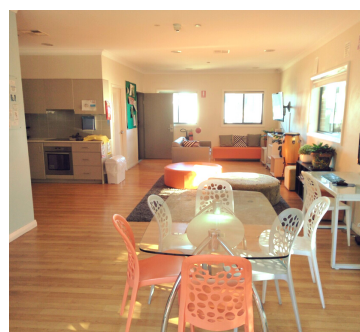
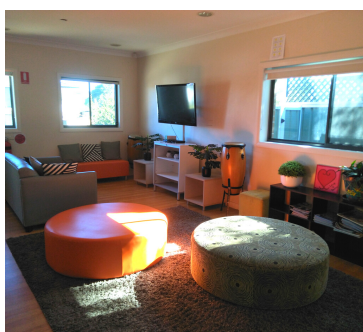
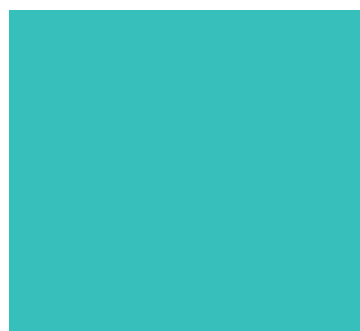


**SPECIALIST DISABILITY
ACCOMMODATION**

**SUPPORTED INDEPENDENT
LIVING**



INSPIRE MORTDALE



**PROPERTY
PROFILE**

ABOUT THE PROPERTY

Inspire has five purpose-built villas with common areas and spaces desirably located in Sydney's South.

The complex is single storey with easy access across the site. With independence and capacity building in mind this service features a large covered common area complete with BBQ, lounges and games area.

Each villa has generous sized bedrooms with a large accessible bathroom and shared kitchen, dining and living area.

Inspire is staffed 24/7 by an experienced team who can support you with daily life skills, budgeting and increased independence. Inspire offers plenty of social activities enabling you to connect with like-minded people.

WHAT'S NEAR BY

- Mortdale train station
- Gannons Park
- Oatley Park
- Local cafes and restaurants
- Hurstville Aquatic Leisure Centre
- Olds Park
- Roselands Shopping Centre
- Kogarah Private & Public Hospital

Villa 1:

2 x bedroom self contained Villa Basic SDA

Villa 2:

2 x bedroom self contained Villa Basic SDA

Villa 3:

2 x bedroom self contained Villa Basic SDA

Villa 4:

1 x bedroom self contained Villa Basic SDA

Villa 5:

1 x bedroom self contained Villa Basic SDA

PROPERTY FEATURES

- 1 x large common laundry
- 1 x large common kitchen
- 1 x staff office / sleepover room
- 1 x common rear garden
- 1 x outdoor living/recreational area



Inspire is a modern purpose built home and boasts five separate Villa Style dwellings.



NEXT STEPS

If you are interested in living at Inspire and you feel it will meet your living and support needs, please follow these steps to make an application:

1

STEP ONE



Contact the QHC Intake team @ intake@qualityhealthcare.com.au or call us on (02) 9598 6000 to discuss the property in more detail and lodge your interest. We will ask you to complete a participant profile form to assist us to determine matching with available vacancies.

2

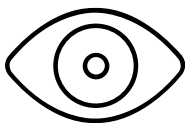
STEP TWO



Organise a viewing of the property by liaising with the QHC Intake team on (02) 9598 6000

3

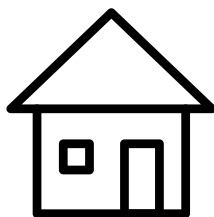
STEP THREE



If you think the property is right for you complete an application form and share your NDIS Plan with the QHC Intake team as well as any other relevant reports and assessment documents.

4

STEP FOUR



Once we get confirmation of SIL funding and the required SDA level we can submit a Roster of Care to the NDIS. Once approved and your plan is confirmed you can move into your new home.

