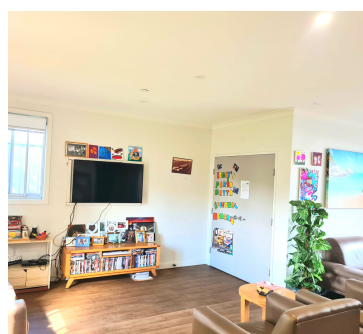
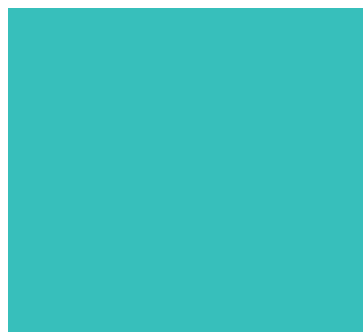


**SPECIALIST DISABILITY
ACCOMMODATION**

**SUPPORTED INDEPENDENT
LIVING**



EMPOWER CASULA



QUALITY HEALTH CARE

**PROPERTY
PROFILE**

ABOUT THE PROPERTY

Empower is a purpose- built accessible home centrally located in Sydney's South- West.

This single storey purpose-built home is cleverly designed into two separate living spaces that offer privacy to the residents while also enabling group activities to take place if residents want to socialise.

Both areas have their own kitchen, dining and living spaces and direct access to a landscaped garden with a huge entertaining area..

Empower is staffed 24/7 by an experienced team who can support you with daily life skills, budgeting and increased independence. Inspire offers plenty of social activities enabling you to connect with like-minded people.

Unit One:

3 x bedroom Basic SDA

Unit Two:

2 x bedroom Basic SDA

PROPERTY FEATURES

- 1 x large common laundry
- 1 x large common kitchen
- 1 x staff office / sleepover room
- 1 x common rear garden
- Reverse cycle air-conditioning

WHAT'S NEAR BY

- Casula Powerhouse Arts Centre
- Casula Mall
- Liverpool Hospital
- Leacock Reginal Park
- RAE Gold Course
- Westfields Liverpool
- Liverpool City Library
- Bankstown Central



Empower is a modern purpose built home that makes use of some clever design to increase living space and privacy for residents



NEXT STEPS

If you are interested in living at Empower and you feel it will meet your living and support needs, please follow these steps to make an application:

1

STEP ONE



Contact the QHC Intake team @ intake@qualityhealthcare.com.au or call us on (02) 9598 6000 to discuss the property in more detail and lodge your interest. We will ask you to complete a participant profile form to assist us to determine matching with available vacancies.

2

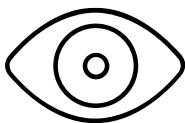
STEP TWO



Organise a viewing of the property by liaising with the QHC Intake team on (02) 9598 6000

3

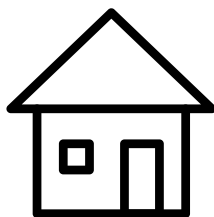
STEP THREE



If you think the property is right for you complete an application form and share your NDIS Plan with the QHC Intake team as well as any other relevant reports and assessment documents.

4

STEP FOUR



Once we get confirmation of SIL funding and the required SDA level we can submit a Roster of Care to the NDIS. Once approved and your plan is confirmed you can move into your new home.

