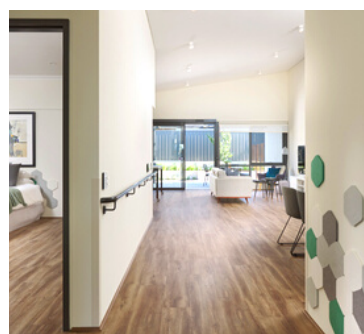


**SPECIALIST DISABILITY
ACCOMMODATION**

**SUPPORTED INDEPENDENT
LIVING**



MOTIVATE MASCOT



**PROPERTY
PROFILE**

ABOUT THE PROPERTY

Motivate is a purpose-built High Physical Support designed property centrally located in Sydney's Eastern Suburbs.

This two-storey home is immaculately presented and designed to accommodate participants with complex and high physical needs. All bedrooms are over sized with a generous ensuite bathroom and the home is networked for internet and any assistive technology needs.

Motivate is drenched with natural light, The large accessible kitchen perfectly positioned on the ground level of the home with a large servery leading to the lower level dining and living area.

Motivate is staffed 24/7 by an experienced team that contains support workers and nurses and the service offers high quality care and support as well as the opportunity to build life skills and independence.

WHAT'S NEAR BY

- The Grounds of Alexandria
- Eastlakes shopping centre
- Bonnie Doon Golf Club
- Prince of Wales Hospital
- Royal Randwick Racecourse
- Centennial Park
- Maroubra Beach
- Coogee Beach

- 1 x 1 bedroom High Physical SDA with ensuite
- 1 x 1 bedroom High Physical SDA with ensuite
- 1 x 1 bedroom High Physical SDA with ensuite
- 1 x 1 bedroom High Physical SDA with ensuite
- 1 x 1 bedroom High Physical SDA with access to the main bathroom

PROPERTY FEATURES

- 1 x large common laundry
- 1 x large common kitchen
- 1 x staff office / sleepover room
- 1 x common rear deck
- 1 x Kitchenette on the first floor
- Internal lift
- Central location
- Reverse cycle air-conditioning

“
Motivate is a modern, spacious and well designed house located in the Eastern Suburbs
 ”



NEXT STEPS

If you are interested in living at Motivate and you feel it will meet your living and support needs, please follow these steps to make an application:

1

STEP ONE



Contact the QHC Intake team @ intake@qualityhealthcare.com.au or call us on (02) 9598 6000 to discuss the property in more detail and lodge your interest. We will ask you to complete a participant profile form to assist us to determine matching with available vacancies.

2

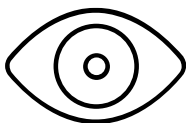
STEP TWO



Organise a viewing of the property by liaising with the QHC Intake team on (02) 9598 6000

3

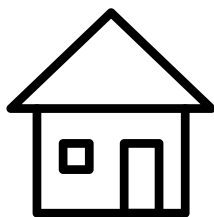
STEP THREE



If you think the property is right for you complete an application form and share your NDIS Plan with the QHC Intake team as well as any other relevant reports and assessment documents.

4

STEP FOUR



Once we get confirmation of SIL funding and the required SDA level we can submit a Roster of Care to the NDIS. Once approved and your plan is confirmed you can move into your new home.

